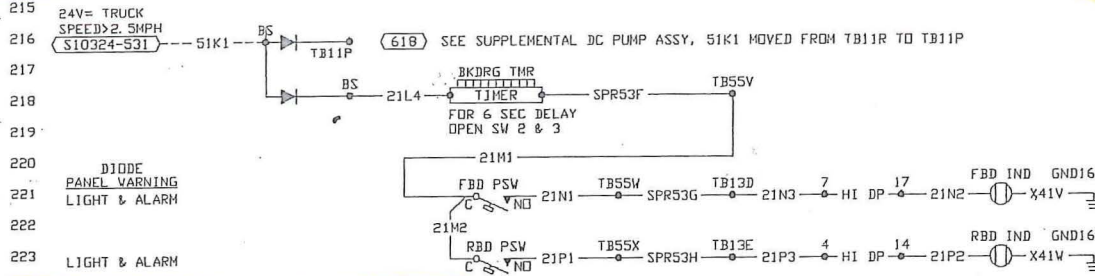
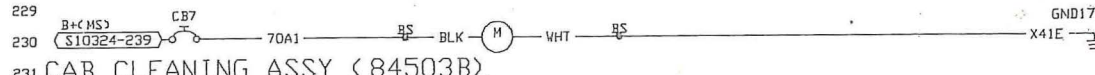


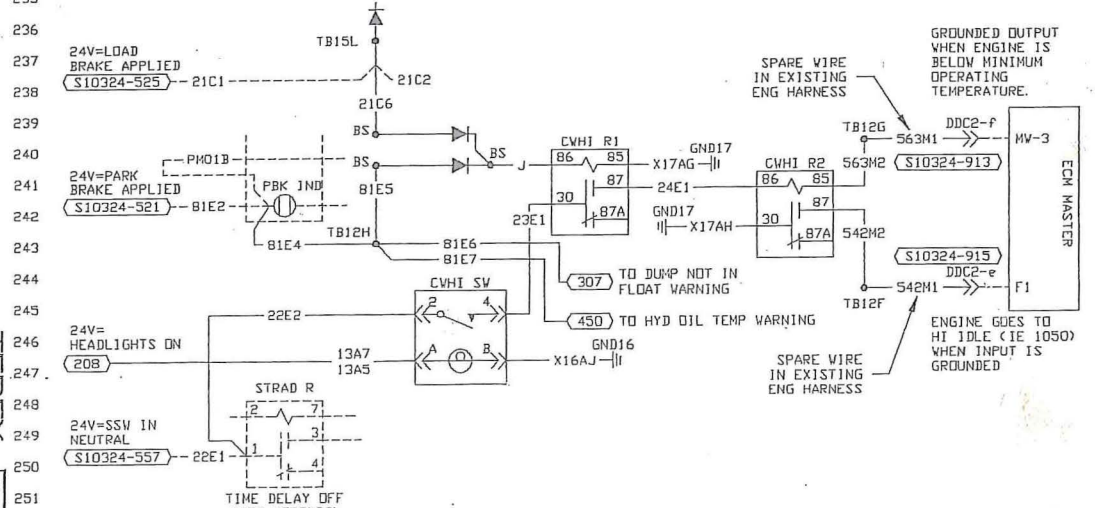
BACKUP LIGHT SWITCH ASSY (85950A)



BRAKE DRAG WARNING (82650P)



CAB CLEANING ASSY (84503B)



THIS DOCUMENT CONTAINS INFORMATION PROPRIETARY TO TEREX MINING, A DIVISION OF TEREX CORPORATION. IT SHALL NOT BE REPRODUCED, USED OR DISCLOSED TO ANYONE WITHOUT PRIOR WRITTEN PERMISSION OF TEREX MINING.

© COPYRIGHT DATE

REAR BRAKE DRAG PRESSURE SWITCH 1

~~DRAG~~

FRONT BRAKE PRESSURE GAUGE

REAR BRAKE PRESSURE GAUGE

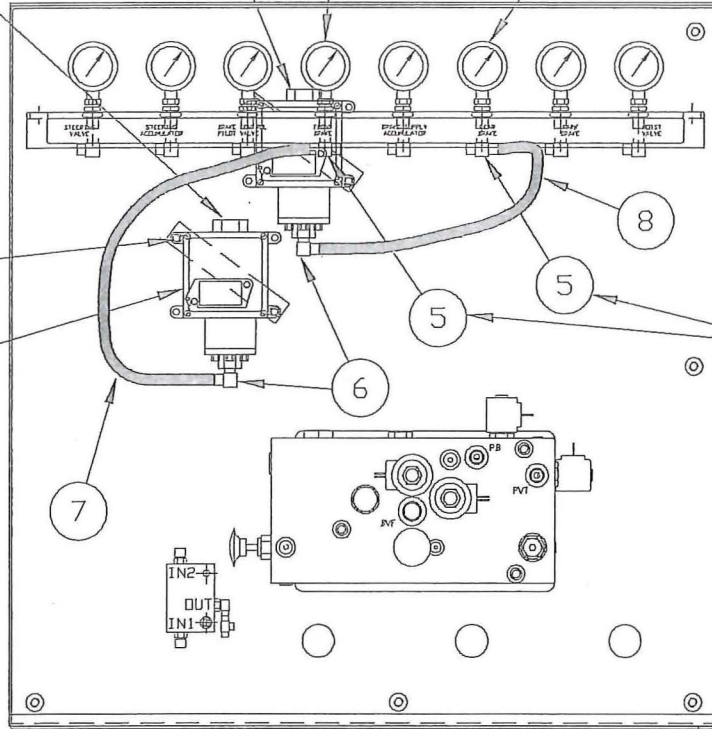
USE W/PLUG SHIPPED W/SWITCH TYP 2 PLCS 22

2 PLCS/SWITCH

FRONT BRAKE DRAG PRESSURE SWITCH 1

21MI FROM TIMER

REPLACES EXISTING ADAPTER



HYDRAULIC COMPONENT BOX BEHIND CAB

DR.
NIELSEN
 ENG. APP.
ROBINSON
 REL. CK.
ELLIS



THIS DOCUMENT CONTAINS INFORMATION IN CONFIDENCE OF TEREX CORPORATION. IT SHALL NOT BE PRODUCED, USED, DISCLOSED TO ANYONE WITHOUT PRIOR WRITTEN PERMISSION OF TEREX MINING. © COPYRIGHT DATE

82650T

DR. NIELSEN
ENG. APP.

REV

93414
E.N. NO.

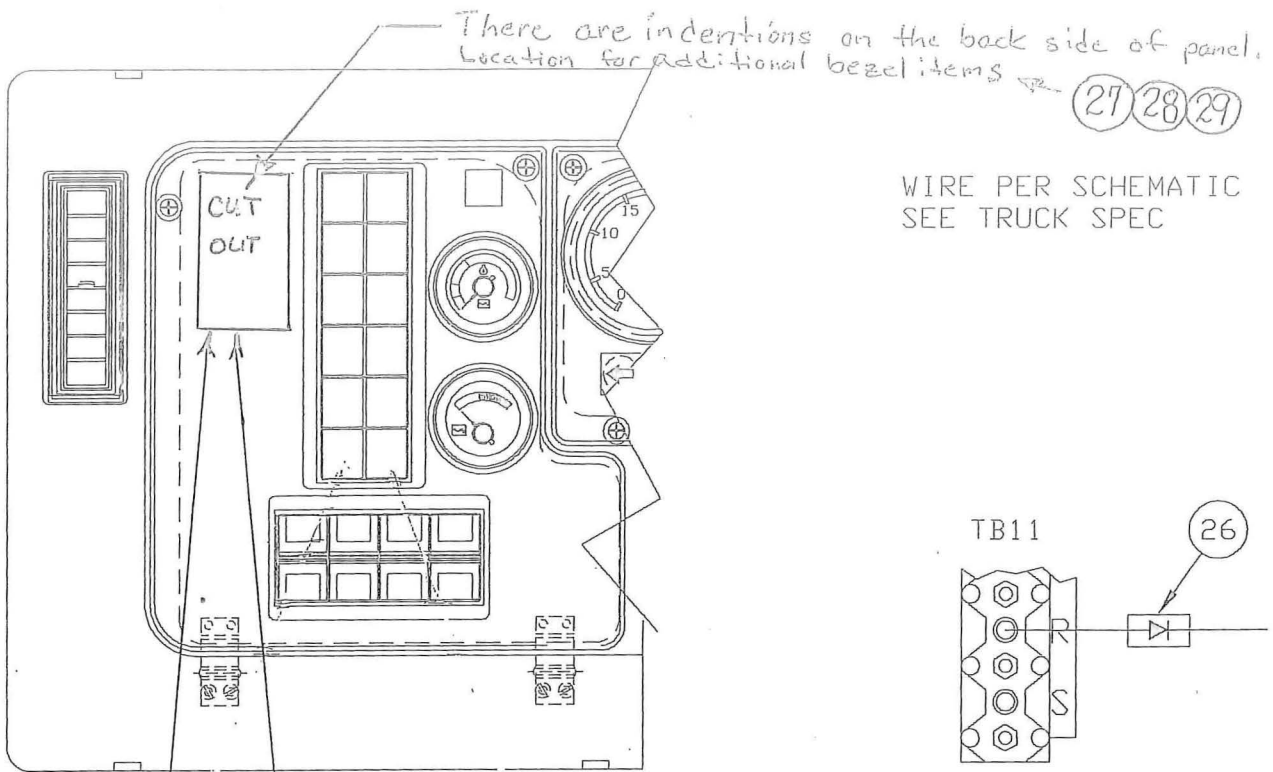
ITEM	QTY	UM	COMPONENT	DESCRIPTION
1	2		53402	SWITCH-PRESSURE
2	4		12315	CAPSCREW, HX, 1/4-20NC X 1-1/4 GR 5
3	4		15675	NUT-HX, CRNLK 1/4-20NC STD GR B
4	4		10162	WASHER, FL, 1/4 X 0.625 OD
5	2		53365-0404 53370-0404	ADAPTER, TEE, BRANCH #4 ORS MALE BRANCH X #4 ORB MALE
6	2		53369-0404	ADAPTER, 90 ORS/NPTF #4 ORS, MALE X 1/4 NPT MALE
7	1		84317A-035	HOSE ASSY FC310-04 35" LG W/FJ9891 & FJ9893 FTGS
8	1		84317A-035	HOSE ASSY FC310-04 35" LG W/FJ9891 & FJ9893 FTGS
S 10	2		83340B	LIGHT-IND (83340A-Z) WITH RED FILTER
11	1		84705A	CARD-IND(DWG A-Z) BRAKE DRAG, FRONT BRAKES
12	1		84705B	CARD-IND(DWG A-Z) BRAKE DRAG, REAR BRAKES
15	2		21428	TERMINAL-FEMALE TAB 1/4 WIDE, 16-14 AWG
16	2		20708	TERMINAL-FEMALE TAB 1/4" WIDE, 22-18 AWG
17	3		20690	TERMINAL RING TONGUE #6 HOLE, 22-16 AWG
17	4		20690	TERMINAL RING TONGUE #6 HOLE, 22-16 AWG
18	4		20707	TERMINAL-RING TONGUE #10 HOLE, 18 AWG
19	1		22755	TERMINAL-BUTT 16-14 AWG
20	14	FT	24582	CABLE-18AWG
21	20	FT	53398	CABLE-20GA SING. /WIRE
22 R	10	QT	52845	SILICONE-RTV
23	1		55720	MODULE, TIMING 1 TO 1024 SEC'S DELAY ON MAKE
24	2		25650	SCREW, MACH, RHD, 6-32NC X 5/8 GR 2
25	2		10122	NUT-HEX(6-32 NC)
26	1		25487	DIODE-SILICON 3 AMP CAPACITY
27	1		83337B	Bezel
28	1		83342B	Raised Indicator (For item 10)
29	2		83342A	Blank

PRESSURE SWITCHES MOUNTED
 IN HYD COMPONENT BOX,
 FOR MT4400DC HYDRAULIC
 COMPONENTS BOX WITH
 PRESSURE GUAGES THAT
 HAVE O-RING BOSS THREADS.



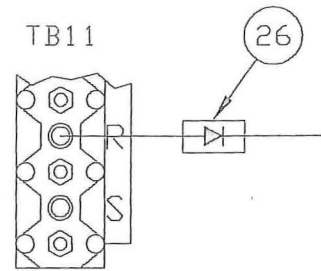
BRAKE DRAG WARNING ASSY
SHEET 3 OF 3
82650P-SK

THIS DOCUMENT CONTAINS THE PROPRIETARY INFORMATION OF TEREX CORPORATION. IT SHALL NOT BE REPRODUCED, USED OR DISCLOSED TO ANYONE WITHOUT THE WRITTEN PERMISSION OF TEREX MINING. © COPYRIGHT DATE



(10)(11) SEE ABOVE
 (15)(16) CONFIGURATION FOR LOCATION

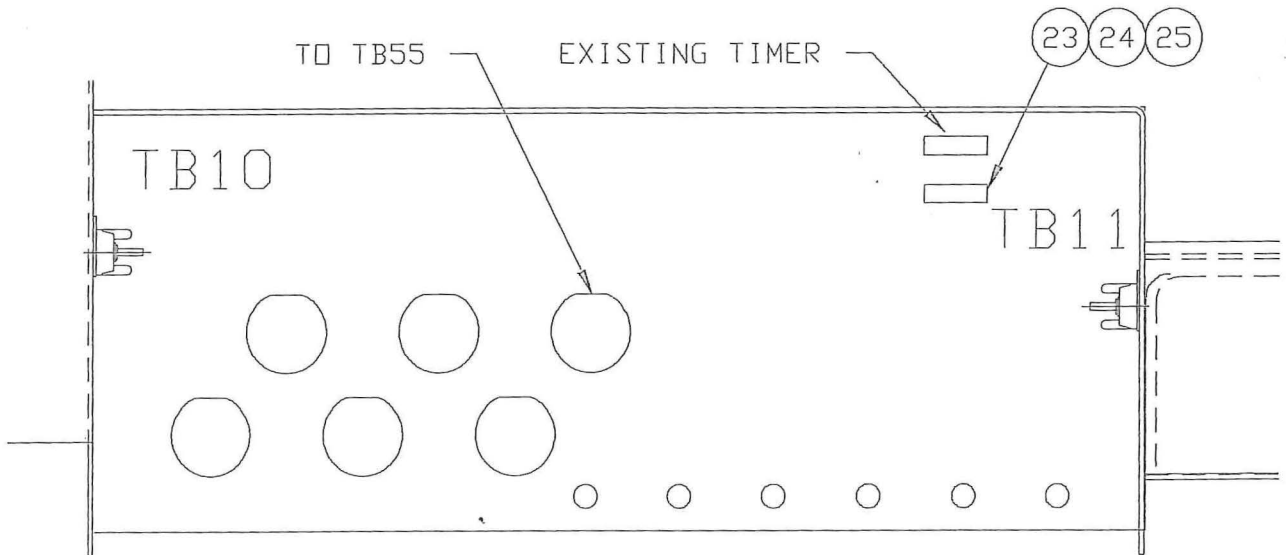
(10)(12)
 (15)(16)



TYPICAL DIODE LOCATION
 (LOCATE PER SCHEMATIC)

DR. NIELSEN
 ENG. APP.

REL. CK.



FRONT OF CAB

**BRAKE
 DRAG**



BRAKE DRAG WARNING ASSY

SHEET 2 OF 3

82650P.SK

- 101 **NOTES:**
102 THIS DRAWING SHOWS 24V WIRING THAT IS UNIQUE TO A SPECIFIC CUSTOMER ORDER. THE CIRCUITS SHOWN BELOW TAKE PRECEDENCE
103 OVER THE STANDARD CIRCUITS SHOWN ON:
104 S10324 ELECTRICAL SCHEMATIC, TRUCK 24V
105 S10492 ELECTRICAL SCHEMATIC, POWER/CONTROL
- 106 REFER TO S10324 AND S10492 SHEET 1 FOR GENERAL INFORMATION AND NOTES.
- 107 SOME FUNCTIONAL INFORMATION HAS BEEN ADDED TO AID TROUBLESHOOTING AS FOLLOWS:
- 108 B+ 24V SUPPLY FROM BATTERY
 - 109 B+(MS) 24V SUPPLY FROM BATTERY THAT IS CONTROLLED BY THE MASTER SWITCH.
 - 110 (S10324-201) REFERS TO ANOTHER SCHEMATIC (IE S10324) AND LINE NUMBER (IE -201) WHERE THIS OPTION CONNECTS TO THE
111 STANDARD CIRCUITS. THE LINE NUMBERS WERE ACCURATE WHEN THIS SCHEMATIC WAS RELEASED. FUTURE REVISIONS
112 TO S10324 AND S10492 WILL NOT BE REFLECTED ON THIS SCHEMATIC.
 - 113 (EXISTING) INDICATES A CONNECTION TO THE STANDARD CIRCUIT SHOWN ON S10324 OR S10492.
 - 114 ----- INDICATES A CONNECTION TO THE STANDARD CIRCUIT SHOWN ON S10324 OR S10492.
 - 115 24V= INDICATES THAT 24V EXISTS WHEN THE CONDITION IS TRUE.
 - 116 GND= INDICATES THAT A GROUND EXISTS WHEN THE CONDITION IS TRUE.

INDEX

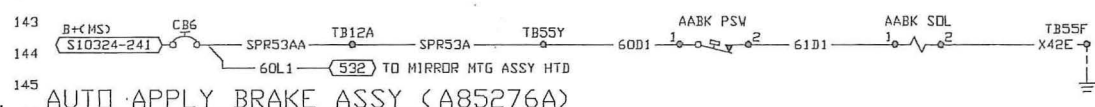
SHEET	DRAWING TITLE (DRAWING #)	ITEM	DESCRIPTION	SCHEMATIC	LOCATION
116	1 AUTO APPLY BRAKE ASSY (A85276A)	AABK PSV	AUTO APPLY BRAKE PRESSURE SWITCH	143	HYD BOX
117	1 AUTOLUBE ASSY (LUBE GREASE FULL INDICATOR--OPTION) (A85398C)	AABK SOL	AUTO APPLY BRAKE SOLENOID	143	HYD BOX
118	2 BACKUP LIGHT SWITCH ASSY (B5950A)	BKDRG TMR	BRAKE DRAG TIMER	217	CAB
119	2 BRAKE DRAG WARNING (B2650B)	BULT SV	BACK UP LIGHT SWITCH	205	CAB
120	2 CAB CLEANING ASSY (B4503B)	CVHI R1	COLD WEATHER HIGH IDLE RELAY 1	240	CAB
121	2 COLD WEATHER HI IDLE (B5524A)	CVHI R2	COLD WEATHER HIGH IDLE RELAY 2	240	CAB
122	3 DUMP NOT IN FLOAT WARNING (B6158A)	CVHI SW	COLD WEATHER HIGH IDLE SWITCH	244	CAB
123	3 DUMP UP MOTOR CUTOUT (NDNE)	DIF XSW	DUMP IN FLOAT PROXIMITY SWITCH	422	HYD BOX
124	3 ENGINE PRELUB ASSEMBLY (A85952B)	DNIF IND	DUMP NOT IN FLOAT INDICATOR	302	CAB
125	3 ENGINE SHUTDOWN ASSY (BY FIRE CONTROL SYSTEM) (B5277A)	DNIF R	DUMP NOT IN FLOAT RELAY	301	CAB
126	4 FUEL PRIMING ASSY (A85464B)	DSV LT	DECK SERVICE LIGHT	532	S/S
127	4 HEATER, ENGINE COOLANT (A85535A)	DSVLT SW	DECK SERVICE LIGHT SWITCH	532	S/S
128	4 HYDRAULIC OIL COOLER (A85399A)	ECL HTR	ENGINE COOLANT HEATER	414	FRAME
129	4 HYDRAULIC OIL TEMPERATURE GAUGE (A85175A)	EOP R	ENGINE OIL PRESSURE RELAY	452	CAB
130	4 HYDRAULIC OIL TEMPERATURE WARNING (B6163A)	FBD IND	FRONT BRAKE DRAG INDICATOR	221	CAB
131	5 HYDRAULIC, TOWING PROVISION (A85189A)	FBD PSV	FRONT BRAKE DRAG PRESSURE SWITCH	221	HYD BOX
132	5 LIGHT ASSEMBLY--HD, TL, CLR--LEDS (A85283B)	FP PMP	FUEL PRIMER PUMP	404	ENG MOUNT
133	5 LIGHTING, ACCESS (B4920N)	FP SW	FUEL PRIMER PUMP SWITCH	405	ENG MOUNT
134	5 LIGHTING, DECK (B4920H)	HIHOT R	HI HYDRAULIC OIL TEMPERATURE RELAY	447	CAB
135	5 MIRROR MTG ASSY HTD (A85279B)	HOCLR R	HYDRAULIC OIL COOLER RELAY	426	FRAME
136	5 RADIO INSTALLATION (76032U)	HOCLR SOL	HYDRAULIC OIL COOLER SOLENOID	428	FRAME
137	6 SPEEDOMETER/TACHOMETER ASSEMBLY (DIGITAL) (B1116P)	HOCLR TMR	HYDRAULIC OIL COOLER TIMER	428	CAB
138	6 SUPPLEMENTAL DC PUMP ASSY. (A85187C)	HOT GA	HYDRAULIC OIL TEMPERATURE GAUGE	436	CAB
139	6 WEIGH SYSTEM ASSEMBLY (A83987K, A84233A, B3991A, A84726A, B5722H, B2286Y)	HOT SN	HYDRAULIC OIL TEMPERATURE SENSOR	437	FRAME
140	6 WINDSHIELD WIPER ASSY (MOTOR CHANGED) (A83432B)	LGF IND	LUBE GREASE FULL INDICATOR	155	FRAME
141		LGF R	LUBE GREASE FULL RELAY	152	CAB
142		LGF SV	LUBE GREASE FULL SWITCH	150	CAB
143		LGFP SV	LUBE GREASE FULL POWER SWITCH	157	FRAME
144		LMJR HTR	LEFT MIRROR HEATER	539	S/S
145		MIRHTR IND	MIRROR HEATER INDICATOR	542	S/S
146		MIRHTR SV	MIRROR HEATER SWITCH	538	CAB
147		PBK PSV	PARK BRAKE PRESSURE SWITCH	508	AXLE BOX
148		PBK R1	PARK BRAKE RELAY 1	307	CAB
149		PBK R2	PARK BRAKE RELAY 2	450	CAB
150		PL PMP	PRE LUBE PUMP	333	FRAME
151		PL THR	PRE LUBE TIMER	324	FRAME
152		PLED PSV	PRE LUBE ENGINE OIL PRESSURE SWITCH	329	ENGINE
153		RBD IND	RIGHT BRAKE DRAG INDICATOR	223	CAB
154		RBD PSV	RIGHT BRAKE DRAG PRESSURE SWITCH	223	HYD BOX
155		RMR HTR	RIGHT MIRROR HEATER	541	S/S
156		S LT2	STAIRWAY LIGHT 2 (RIGHT SIDE)	524	HOOD

FOR LISTING OF STANDARD EQUIPMENT, SEE SHEET 1 OF S10324.

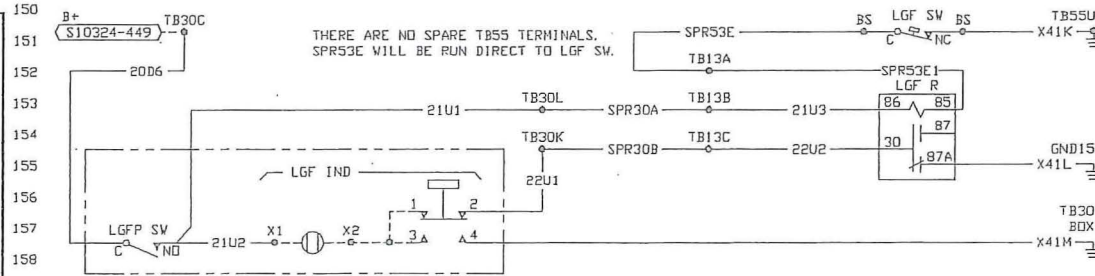
MT4400 S/N218-219
MABUSH MINES



SHEET 1 OF 6
S10324Z



AUTO APPLY BRAKE ASSY (A85276A)



AUTOLUBE ASSY (LUBE GREASE FULL INDICATOR--OPTION) (A85398C)

UNIT RIG DIODE CARD WIRE LOCATION

HIGH DIODE CARD (PAIRS)		LOW DIODE CARD	
1	51H1 CHECK ENG.	1	
2	51J1 STOP ENG.	2	
3	5 MIN SHUTDOWN	3	31K3 LOW HYD. OIL LEVEL
4	21P3 BRAKE DRAG REAR	4	51D3 HIGH HYD. OIL TEMP.
5	51F2 LOW STEERING	5	31L3 LOW BRAKE PRESS.
6	81W3 DUMP BODY UP	6	88D3 BLOWER FAULT
7	21N3	7	88B3 SYS. FAULT
8	31A1	8	31E3 LOW FUEL
9		9	
10		10	
11	51H2 CHECK ENG.	11	
12	51J2 STOP ENG.	12	
13	5 MIN. SHUTDOWN	13	
14	21P2	14	
15	51F3	15	
16	81W2	16	
17	21N2	17	
18		18	
19	31D1	19	31H1
20	31F1	20	31B1

PRESS TO TEST

JUMP	X16L	31F1
31B1	13C1	30F1

T.B. 15 R/H CONSOLE BY RELAYS